



Children and Young People's
Exhibition
Towner Gallery, Eastbourne 2019

Towner Gallery - Eastbourne



EASTBOURNE
Borough Council



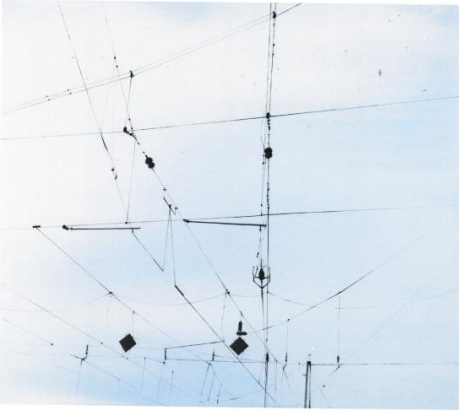
www.eastbourne.gov.uk

Project Outline



- Towner Gallery has provided 12 art works for schools.
- We will be using one of the art works as our starting point for Term 3.
- All year groups will be taking part during their art lessons.
- We will be having a visiting artist coming into school on Tuesday 15th January.
- We will be making one large piece of art which will be displayed in the Towner Art Gallery from 5th April-2nd June.
- You can take your friends and family to see the exhibition free of charge.

The Towner Gallery gave us images of 12 pieces of Art as a starting point for our work. All of the works were by female contemporary artists.



Elizabeth Magill Overhead (2), 2002

©Elizabeth Magill. All Rights Reserved. DACS 2018.
Image Towner Collection.



Carol Wyatt The Eye of the Storm, undated

©The Artist's Estate.
Image Towner Collection.



Marguerite Douglas Thompson Morning, 1966

©The Artist's Estate.
Image Towner Collection.



Ursula Mommsen Large Painted Jar, 1979-1982

©The Artist's Estate.
Image Towner Collection.





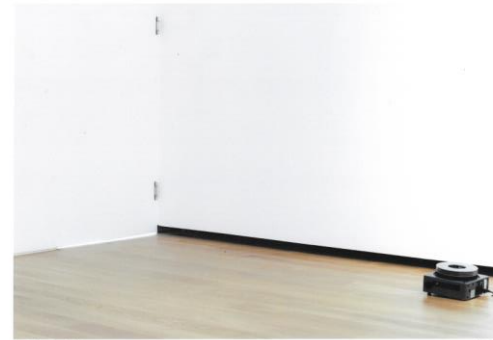
Elisabeth Frink Harbinger Bird III, c.1960

©Estate of Elisabeth Frink. All Rights Reserved, DACS 2018.
Image: Turner Collection.



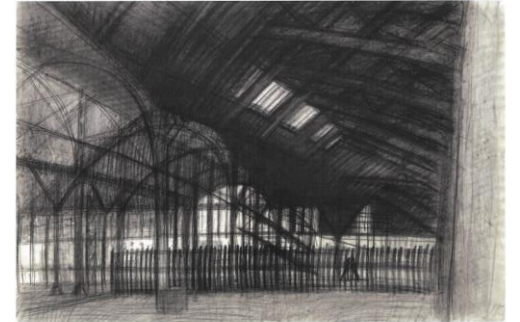
Ana Maria Pacheco Box of Heads (Studies for
The Banquet Sculpture), 1994

©Ana Maria Pacheco/ Bridgeman Images 2018.
Image: Turner Collection.



Cool Player Door, 1995

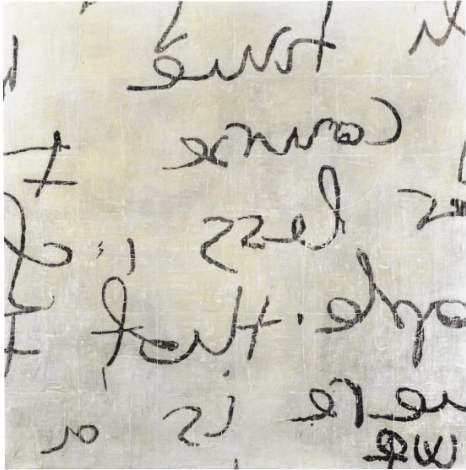
©Carl Froyen
Image: Turner Collection.



Jane Stanton Two Slips, 1983

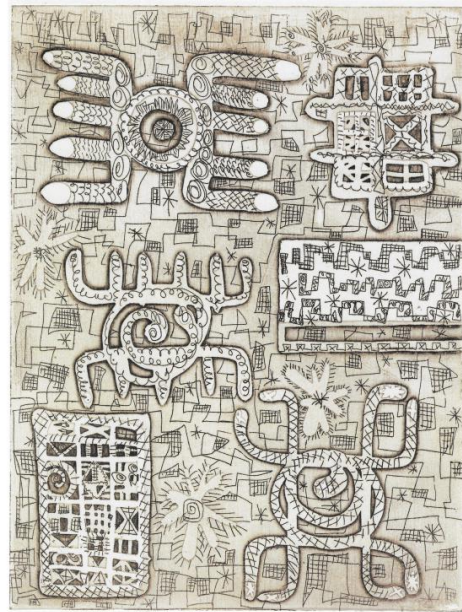
©Jane Stanton
Image: Turner Collection.





Rachel Cohen Untitled, 1994

©Rachel Cohen.
Image Towerer Collection.



Berenice Sydney Totem, 1969

©Estate of Berenice Sydney.
Image Towerer Collection.



Elmer Ballingham Smith River Meadows, Lyons Lithograph, 1955

For J. Lyons & Co Ltd. ©Elmer Ballingham.
Image Towerer Collection.



Elizabeth Blackadder Tuscan Landscape, 1960

©Elizabeth Blackadder.
Image Towerer Collection.

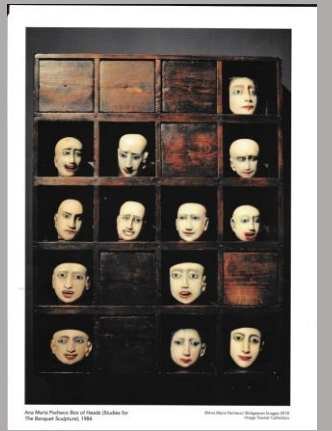


Introduction to the Project

We observed the art works and made comments about each one

We will be working with 'Box of Heads' by Anna Maria Pacheco

We drew portraits observing the proportion and placement of the features



Each Year Group Contribution to our Exhibit for the Towner Gallery

Reception Class

INDIVIDUALITY

Collage of self portraits using any 2D medium

Mrs Wintle gave each year group a theme to work with for the term and we experimented with a range of materials and techniques using 'Box of Heads' as our starting point

Year 1&2

PERSONAL IDENTITY

Collage of individual self portraits using acrylic paints and colour mixing techniques

Year 3&4

MOODS AND THOUGHTS

How do our faces change though mood and expression. Collage using a 3D sculpture techniques

Year 5&6

CREATIVITY AND TECHNICALITY

Using the theme of Venetian Masks explore your creativity and

Draw
me in

Draw
me in

Draw
me in

Visit from Professional Artist Jenny Staff





We studied the 'Angle of the Gaze' and thought about the characters of each head in the box. We made clay models to show these thoughts and observations



The clay heads we made. Each showing a different mood or expression



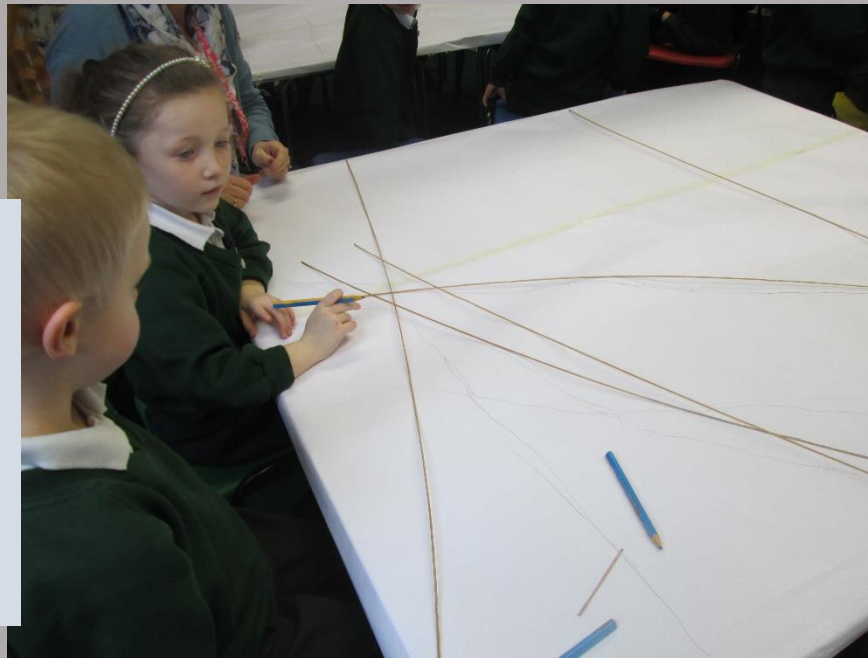
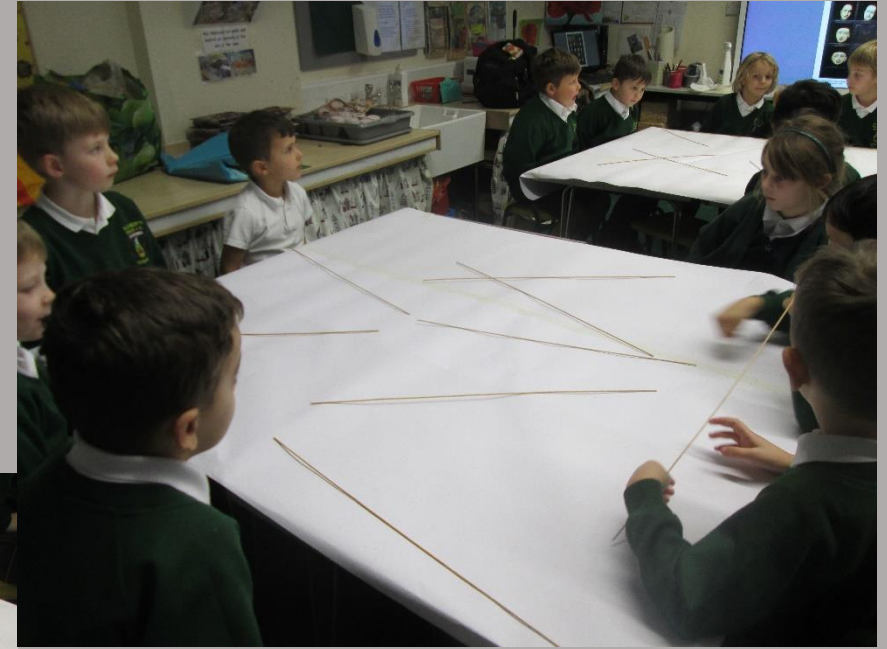
Year 3



Year 4

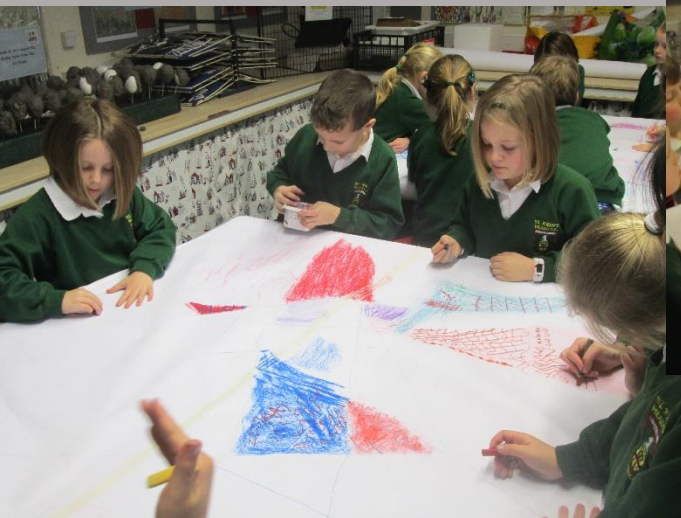
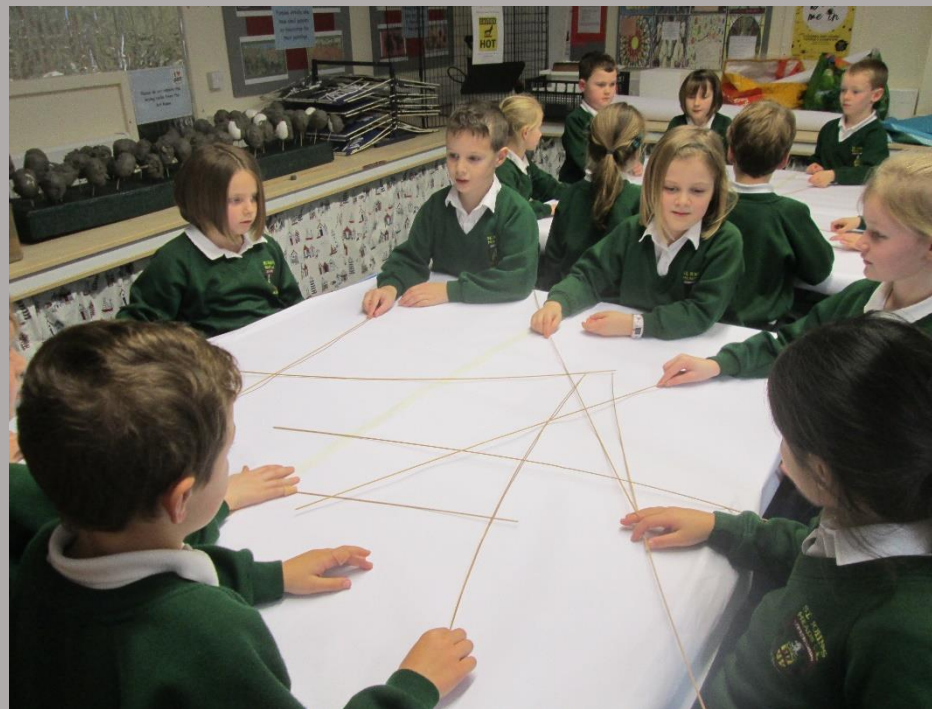


Year 1



We studied the 'Angle of the Gaze' in a different way and thought about the lines the gaze took as each head looked out of the box. We made these into an abstract design.

Year 2



Year 1&2





Year 1&2
The Completed Abstract Designs



Year 3&4 Moods and Thoughts

How do our expressions change with our mood?





We pulled faces to observe how our expressions change with our mood






Year 4

We Made Mood faces in Relief using Plasticine and Modroc





Year 3&4 have worked
with plasticine and
Modroc to complete
relief pictures of
faces which show
moods and thoughts.



Year 1 Timed Group Work

PERSONAL IDENTITY

- Green Group
- Roll your background paper lightly using a maximum of two colours
- Blue Group
- Paint your card figure with school uniform

DO NOT PAINT EYES
NOSE, MOUTH



- Red Group
 - Write thought bubbles telling us about your favourite things you like in school
 - Colour the background
- Yellow Group
- Write thought bubbles telling us about your favourite pastimes out of school
- Colour the background

PERSONAL IDENTITY

My name is.....

My age is.....

My hair colour is.....

My eye colour is.....

Eye Colour

Blue

Green

Brown

Hazel



Hair colour

Light brown

Dark brown

Auburn

Blonde

Golden blonde





Year 1 Exploring Personal Identity

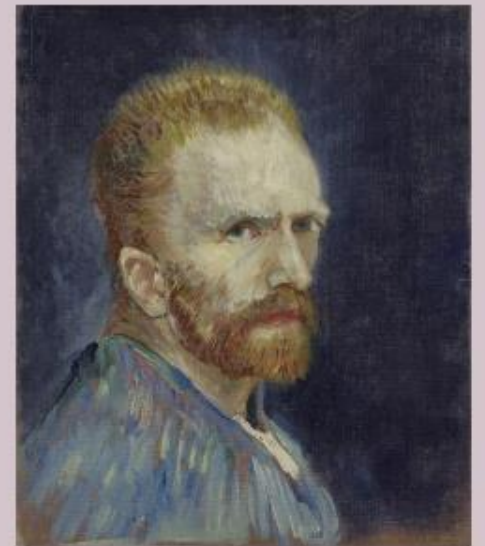
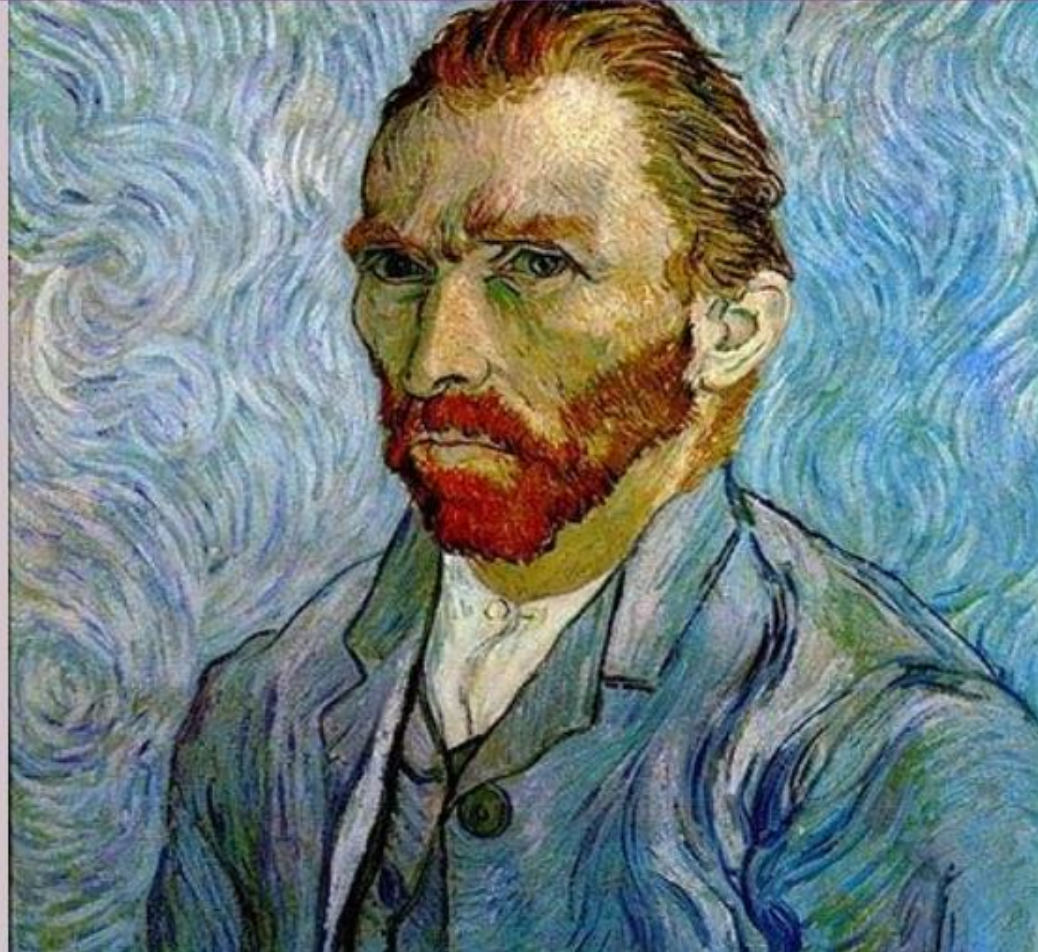
❖ Vincent Van Gogh was a famous Dutch Painter.

❖ He was born in Holland in 1853 and died in 1890.

❖ He enjoyed painting self portraits and painted over 30 pictures of himself.

Yr 1 Self-Portraits

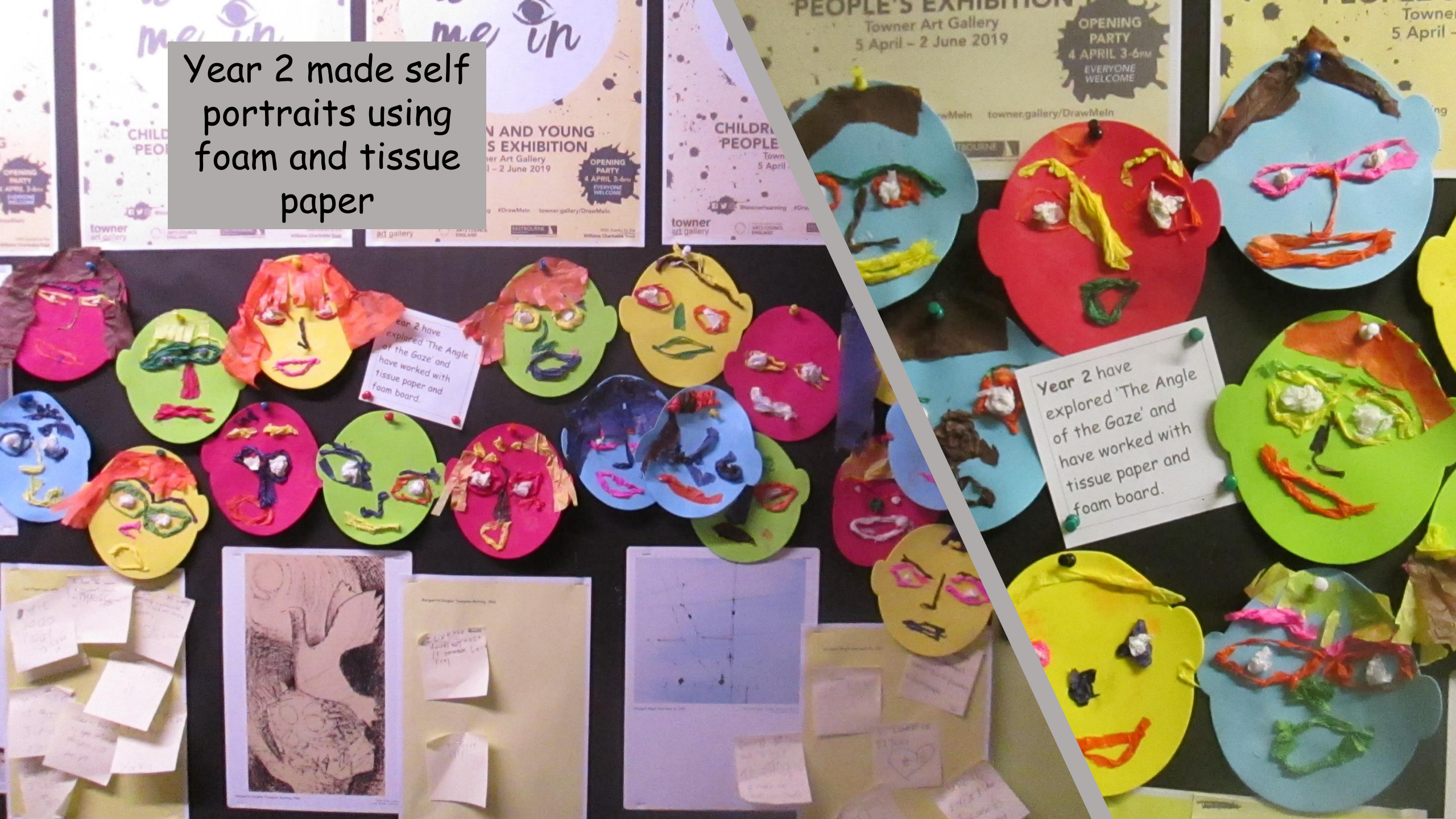
Painting with large and small brushes





Year 1 – Self Portraits

Year 2 made self portraits using foam and tissue paper





Personal Identity - Finger Prints

No two people have been found to have the same fingerprints.

We are all totally unique

https://www.youtube.com/watch?v=cZKGpg_fttw

Year 1&2
explored finger
prints as part of
their personal
identity theme



Arch (A)



Loop (L)



Whorl (W)

Finger Print Art







Year 1&2 Using Finger Prints to explore shape and pattern



Year 2

We explored our
personal silhouette
and cut these in
black paper







Year 2 - Personal Identity Silhouettes

Collage



Have you
seen this
collage of the
Queen?

Looking at the collage close-up

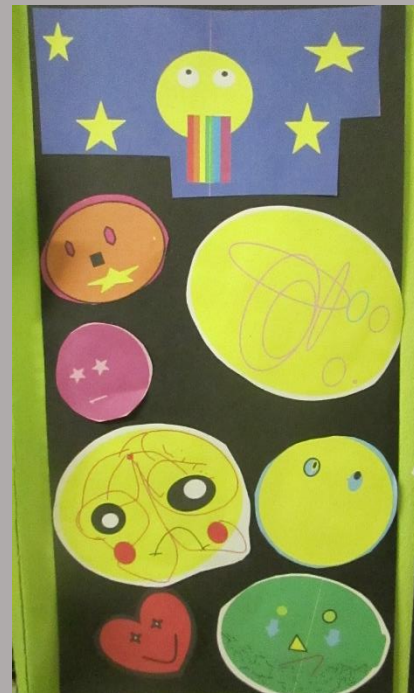
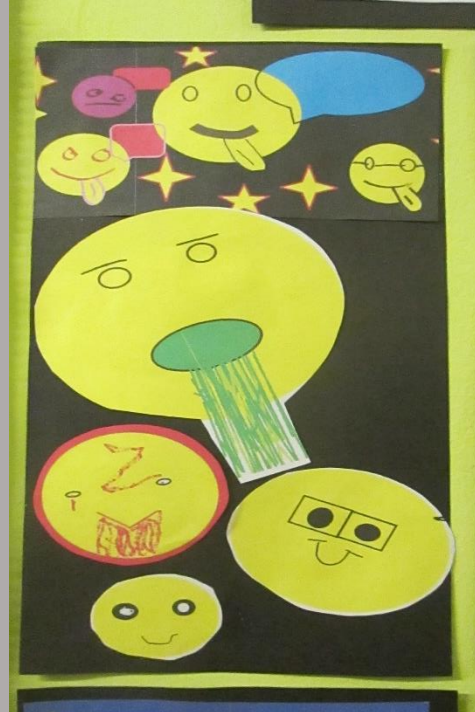
- ❖ Sir Peter Blake created this collage from BBC viewer's family pictures.
- ❖ He has sorted the colours and used them in his portrait of the Queen.





Year 2 – Self Portrait Collages

Year 4 Exploring Emojis using ICT Paint



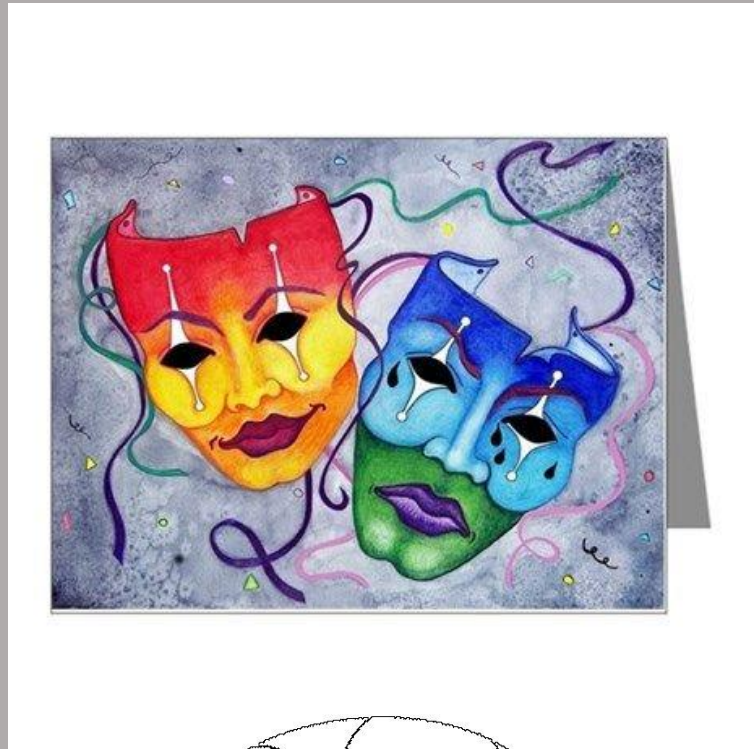
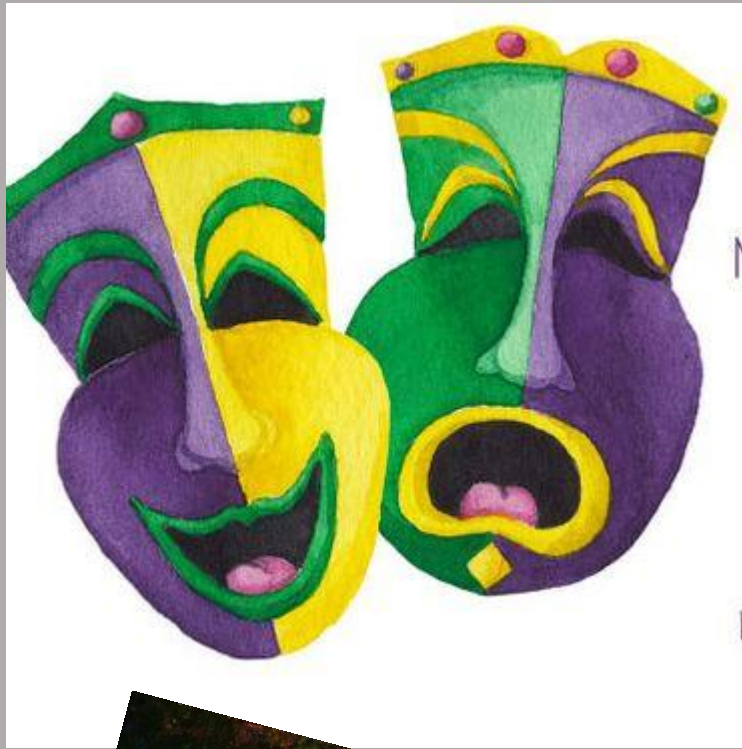
Year 3&4
Explored Comedy
and Tragedy
Masks



**ANCIENT
GREEK ACTORS USED
COMEDY AND TRAGEDY
THEATRE MASKS TO
DEPICT EMOTIONS
CLEARLY TO THE ENTIRE
AUDIENCE FROM THE STAGE.**

<https://www.youtube.com/watch?v=-rDRnk-rhCg>

Buzzle.com







Using ICT to manipulate the
image





Mrs Wintle
showed Year 3&4
an exhibition she
had seen in
Glasgow









Greek Comedy
and Tragedy
Masks









Year 6 Half Term Booster Day

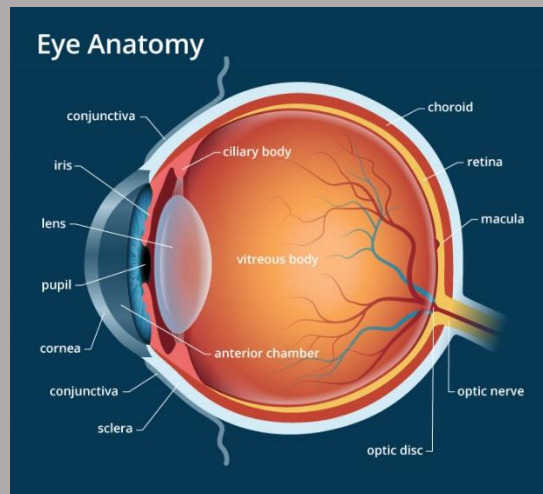
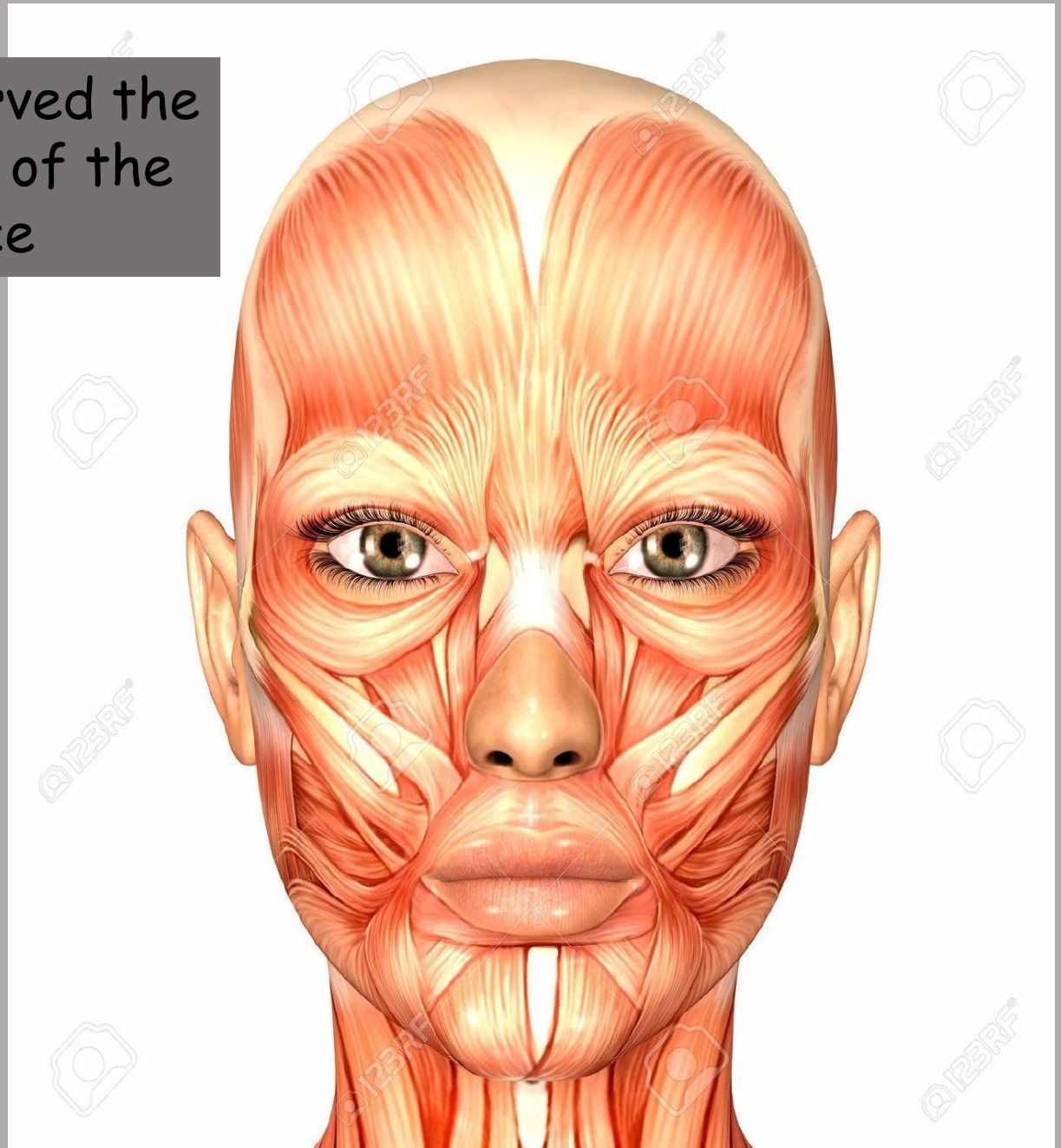
Sculpting with Air Dried Clay

<https://www.youtube.com/watch?v=qokqFRI5yNU>





We observed the
anatomy of the
face



Year 6 Booster Day

Sculpting heads with air dried clay





Preparation for the Towner Gallery Schools Exhibit

St John's Meads CofE
Primary School 2019





Painting the background
for the display boards

Preparation of final boards for display



Rehearsing Final Layout (Year 5&6 board unfinished at this stage)



All boards finished ready for delivery to the Towner Gallery

Reception Class - Individuality



Year 1&2 – Personal Identity



Reception Class – Individuality (detail)



Year 1&2 – Personal Identity (detail)



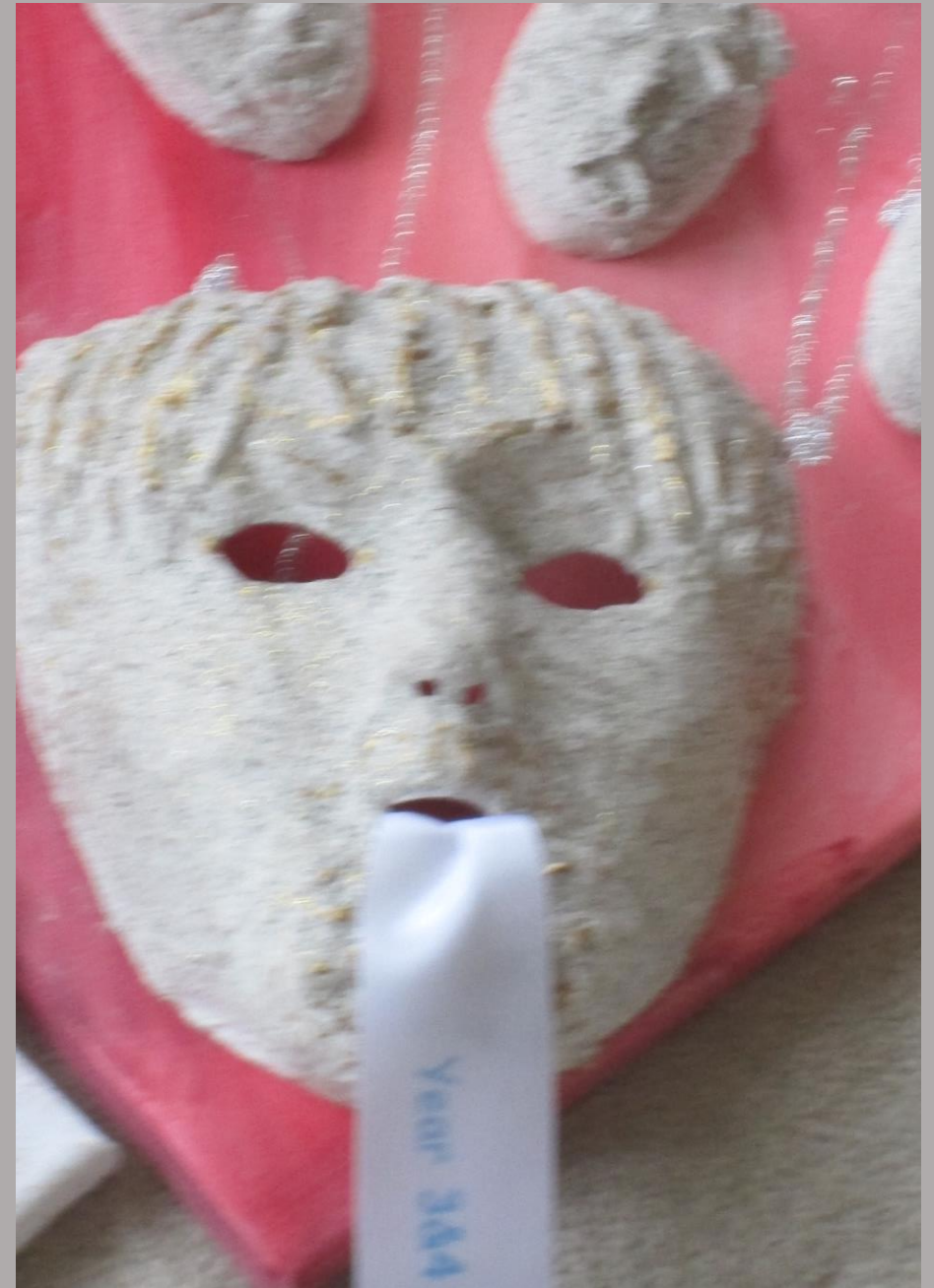
Year 3&4 – Moods and Emotions



Year 5&6 – Creativity and Technicality



Year 3&4 – Moods and Emotions (detail)



Year 5&6 – Creativity and Technicality (detail)





At the Towner Art Gallery Schools Exhibition





Berenice Sydney Totem, 1969

©Estate of Berenice Sydney
Image Towner Collection



RIVER MEADOWS. Pencil drawing by ELINOR BELLINGHAM SMITH. Published by J. Lyons & Co. Ltd. Lithographed and printed by Clarendon, Ltd. London.

Elinor Bellingham Smith River Meadows, Lyons Lithograph, 1955

For J Lyons & Co Ltd
lms



Ursula Momms Large Painted Jar, 1979-1982

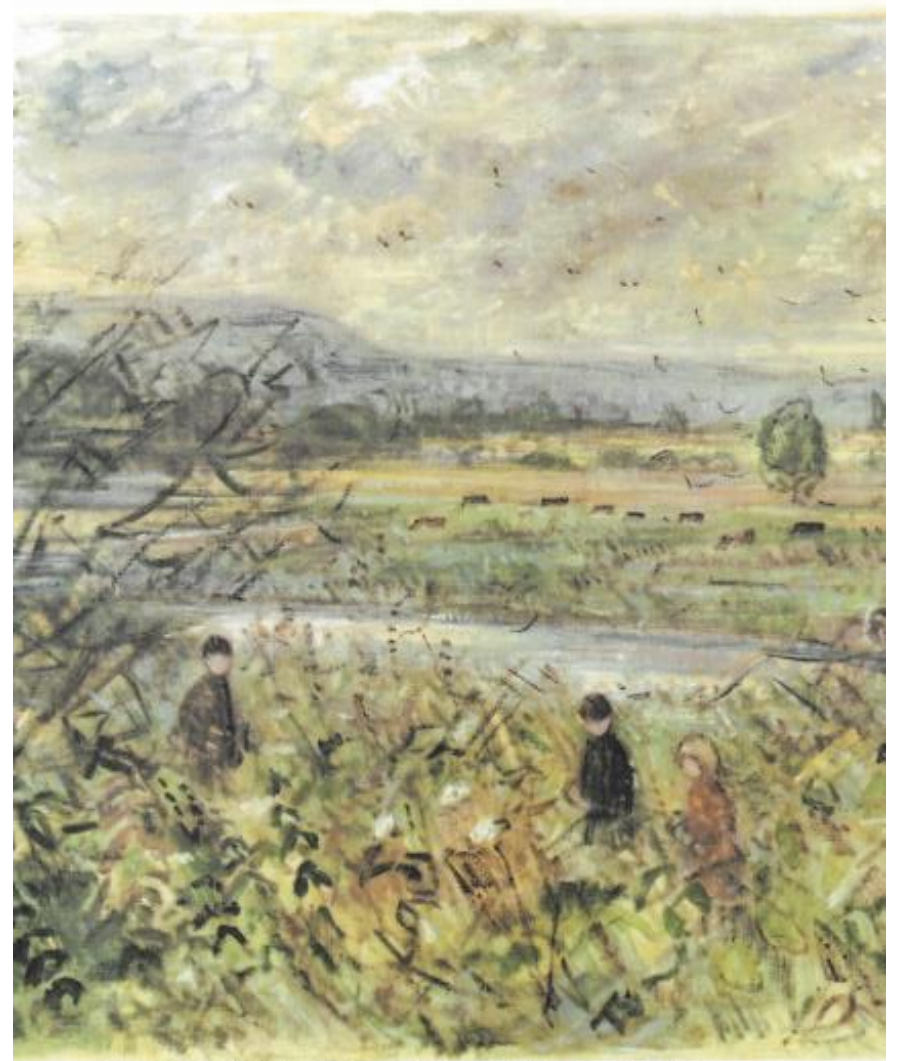
©The Artist's Estate
Image Towner Collection

Final 3 lessons following theTowner Exhibition



Ursula Mommens Large Painted Jar, 1979-1982

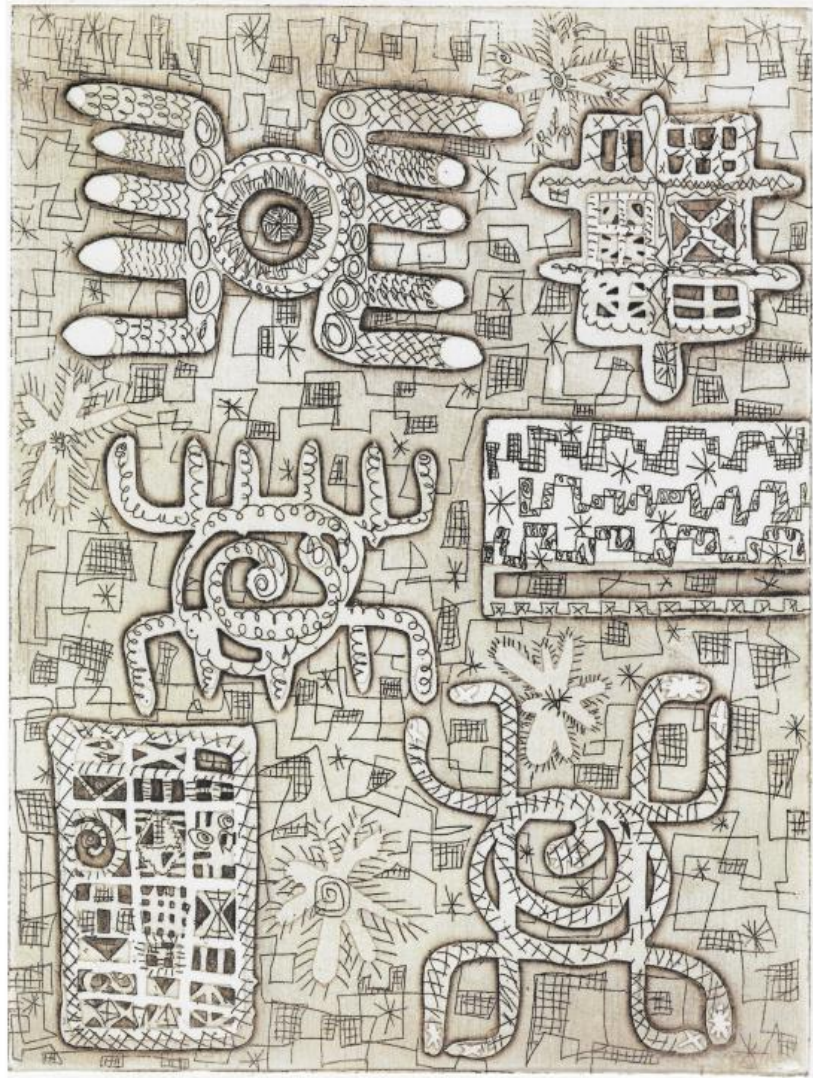
©The Artist's Estate
Image Towner Collector



by ELINOR BELLINGHAM-SMITH • Published by J. Lyons & Co. Ltd. • Lithographed and printed by Clarendon Ltd. London

• Meadows, Lyons Lithograph, 1955





Berenice Sydney Totem, 1969

©Estate of Berenice Sydney
Image Towner Collection

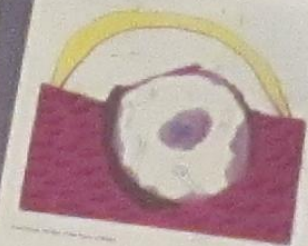


D&T Project

Draw
me in

Name John Smith
Class 4

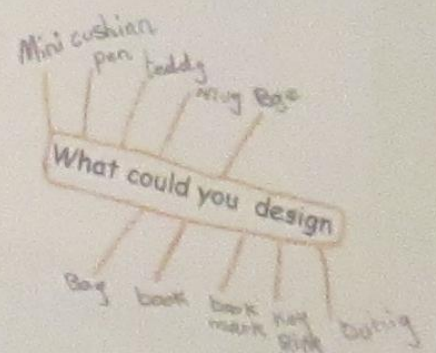
Draw
me in



Design Task
The Gallery shop has asked you to design a range of goods to sell incorporating one of the images

What is the name of the work you have chosen?

What is the name of the Artist?



In the space below, draw four ideas
Label everything to tell us about materials
and design.

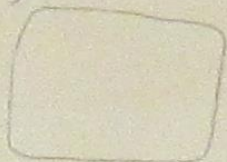
1



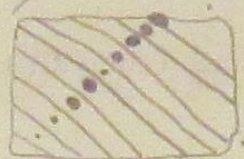
2



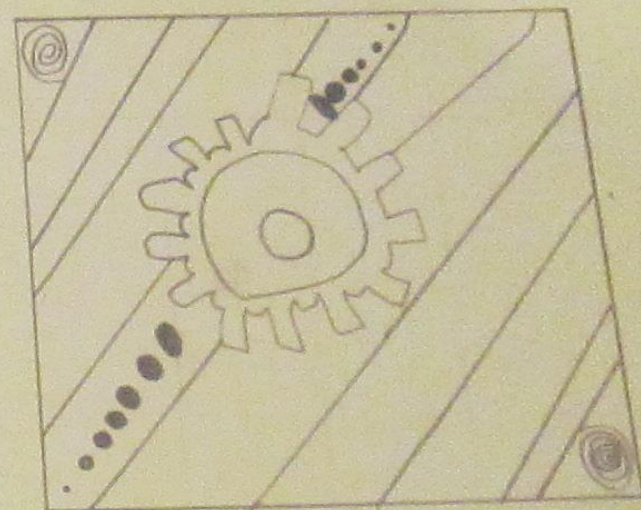
3



4

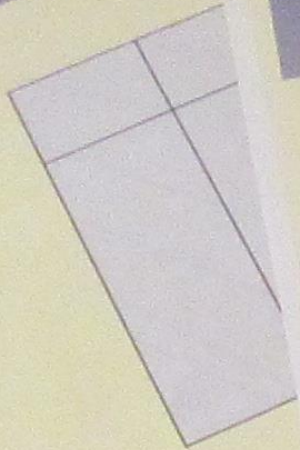


In the space below, make a *large, clear*
drawing of your chosen idea.
Label everything to tell us about materials



Which idea will you choose and why?


Decide on four price brackets.
Eg. 20p-50p, 50p-£1, £1-£1.50, £1.50-£2.00
Ask the rest of the class how much they
would be prepared to pay for the item.



Make a PROTOTYPE of your item using paper,
card or fabric.
Stick a photo of it in the space below


Evaluate your work

What went well, or what am I pleased with?

I'm pleased with my stuffing 

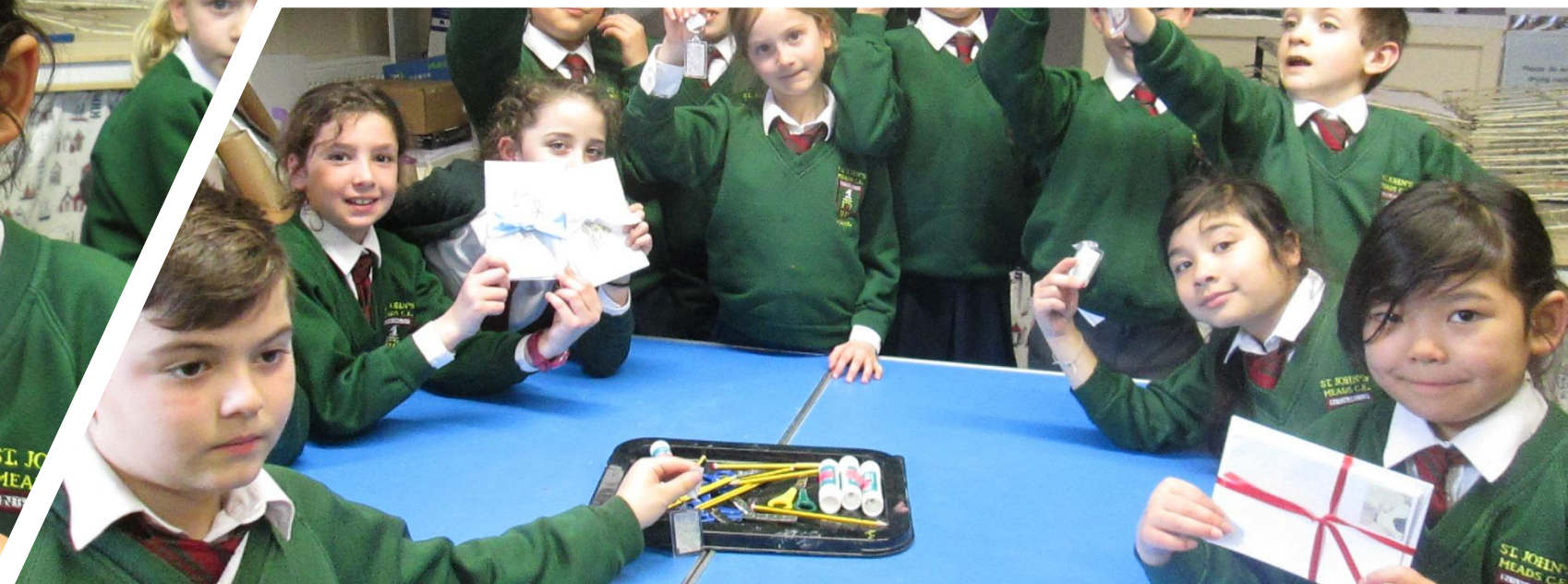
My sewing didn't go well but that was ruined it.

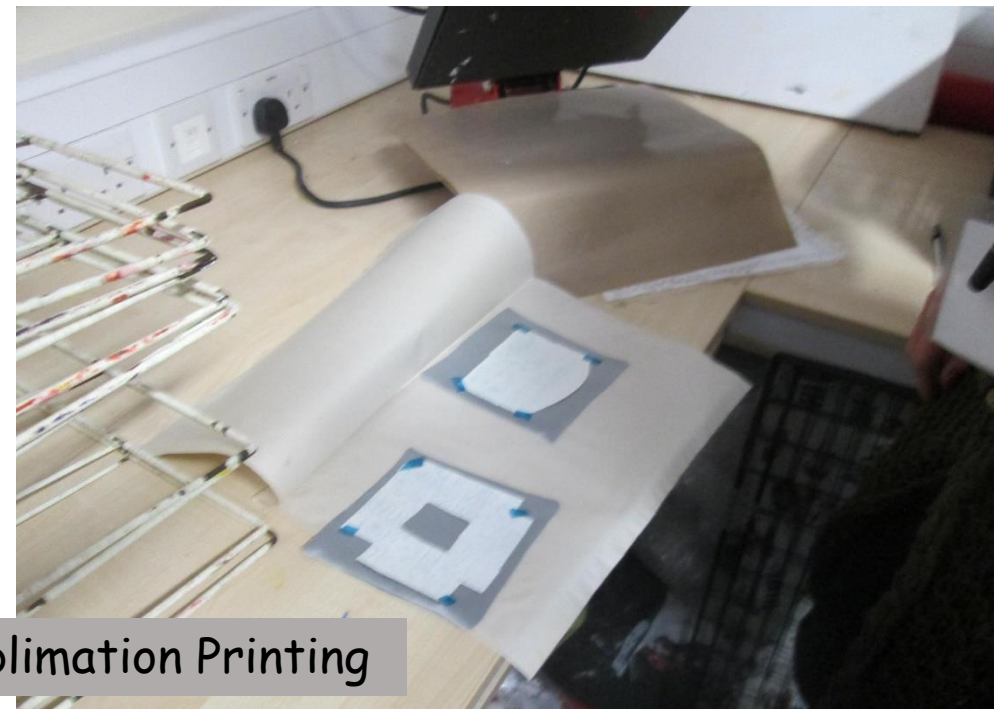
What did not go so well or what am I not as pleased with?

Next time I will ask for help. 

Ask someone else what they think of your Prototype and how your design could
be improved.

Carrie likes me decorations. she likes
but she thinks I can
tola





Year 4 Sublimation Printing





I was
drawn in