

NEWSLETTER



office@sjm.academy

<https://sjm.academy/>

Term 4 Week 1

19th – 23rd February 2024



Whole School Reminder:
NO NUTS are to be brought
in to school. Thank you.

Rainbow Award Winners

Reception – Eleri

Year 1 – Lily

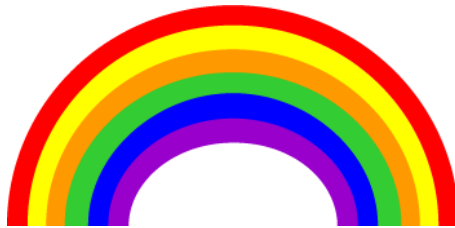
Year 2 – Daniel

Year 3 – Mila

Year 4 – Oscar

Year 5 – Dawson

Year 6 – Aban



School Calendar Dates

Monday 19th February - First day back - Term 4

Monday 4th March - INSET DAY

Thursday 7th March - World Book Day

Thursday 28th March - Last Day of Term 4

Monday 15th April - First day back - Term 5

Friday 24th May - CLASS PHOTOS

Friday 24th May - Last Day of Term 5

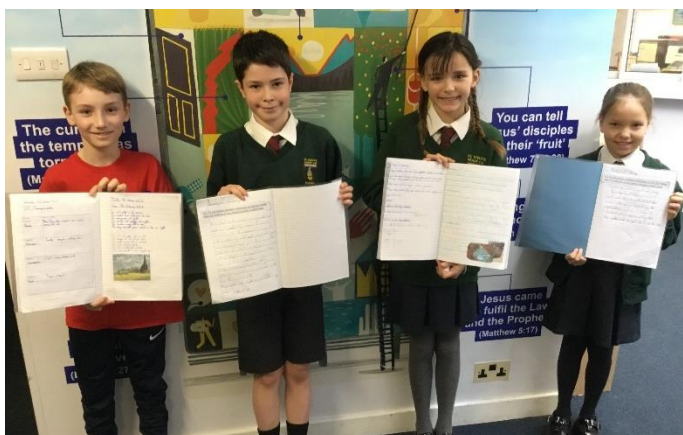
Monday 3rd June - First day back - Term 6

Tuesday 23rd July - Last day of Term 6

Celebration Assembly

We enjoyed celebrating excellent efforts in handwriting, Lexia, Mathletics, times table and number clubs and Spanish this morning.

And of course, special congratulations for being such positive role models go to this week's Rainbow Award winners!



Out of School Achievements

Well done to Athena, Aleisha and Isla who have achieved outside of school in piano, gymnastics and tennis!



Stanley received the Student of the Month award from Canton Martial Arts, for showing excellent teamwork, discipline and being an integral part of the club.

Teddy was man of the match at the weekend, and scored his first goal for his team.



NSPCC Number Day

Thank you all for your support on number day!

Thanks to all of your donations, we raised a fantastic... **£180!**

Makaton – Sign of the week

Let's talk Makaton

This week our sign is...

sad

A young boy in a dark blue shirt is making the Makaton sign for the word "sad". He has his right hand up to his face, with his index finger pointing up and his thumb pointing down, mimicking the shape of the letter 's'.

The graphic features a border of colorful handprints. On the left, there is a large yellow hand icon. The text "Let's talk Makaton" is in yellow, and "This week our sign is..." is in blue. Below this, the word "sad" is written in black, accompanied by a drawing of a sad face and a hand sign. To the right, a photo shows a young boy making the hand sign.



**East Sussex School Health and
Children's Integrated Therapy Services**



Eight fun one-hour
interactive sessions suitable
for the whole family.

Virtual and face-to-face sessions available



© 2019 NHS. Produced by the NHS HT Communications Team | 0300 123 4062 | 0300 793 0000



Please contact 0300 123 4062 or visit
www.eastsussexchildren.nhs.uk/healthy-habits

Service provided by Kent Community Health NHS Foundation Trust

St Andrew's Prep Holiday Camp (Eastbourne)

Pied Piper Activities

holiday camps at St Andrew's Prep

Embark on an exciting journey with Pied Piper multi-activity camps, the ultimate experience for children aged 4 to 12 during their Easter and Summer holidays!

Providing fantastic OFSTED registered childcare with over 60 different activities for children to take part in, you will have complete peace of mind knowing that your children are not only having a great time but are safe and cared for too.

Our camps are safe, friendly, and secure, ensuring your child's adventure unfolds in a nurturing environment. Our handpicked staff are carefully selected for their fun-loving, caring, enthusiastic and committed nature and their ability to deliver the Pied Piper difference throughout your child's week at camp.

Join us at Pied Piper at St Andrew's Prep, where joy knows no bounds, and every moment is a chance to create wonderful childhood memories that last a lifetime!



BOOK NOW ONLINE



Scan me to book!



Creating wonderful childhood memories...

Contact us:

E: teamyellow@piedpiperactivities.co.uk

W: piedpiperactivities.co.uk

Follow us on:

@PiedPiperActivitiesLtd

piedpiperactivities

MV FUNTASTIC PLAYSCHEME

Open throughout
school holidays
Book Now

@MVFuntastic & @MichaelVickyFuntastic

mvfuntastic@outlook.com

www.mvfuntastic.co.uk

07368419455



LANGNEY

Primary Academy

4* to 11 years

8:30am - 3:30pm £18

8:30am - 5pm £22

*4 year olds already attending reception in school

- Childcare made easy
- Ofsted registered
- Childcare vouchers accepted
- Fully qualified/trained staff
- DBS checked
- First Aid trained
- Book in at one venue or multiple





**SKILLS
FOR LIFE**

Multiply

**FREE HELP WITH
HOMEWORK COURSE**
& £20 voucher upon completion

BECOME MORE CONFIDENT WITH NUMBERS

If you want to help your child with maths homework, and feel like you could do with a refresher then this is the course for you. Make maths fun and easy for the whole family!

This programme is for anybody 19+ years old who hold the following maths grades:

- CSE - 2, 3, 4, 5 or U
- O-Level - D, E or U
- GCSE - D, E, F, G or U
- GCSE - 3, 2, 1 or U

Programme Details:

- 16 hours over 8 weeks
- Online or in-person training sessions



After completing this short course you will receive a free Amazon Gift Card worth twenty pounds!

GET IN TOUCH TODAY TO LEARN MORE

- 01323 411517
- enquiry@hts.ac.uk
- www.hts.ac.uk

**SCAN
ME**



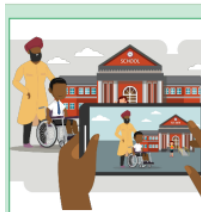
**EAST SUSSEX
LOCAL
OFFER**

A website and directory providing information about support for children and young people (0-25) with Special Educational Needs and Disabilities (SEND), and their families.



The East Sussex Local Offer consists of:

- ➔ an information site that outlines how different SEND processes work: localoffer.eastsussex.gov.uk
- ➔ a SEND-specific directory, listing both local and online services: 1space.eastsussex.gov.uk/localoffer



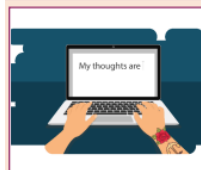
What you will find on the Local Offer information site

- » A comprehensive resource to help guide families through learning more about SEND, finding what support is available, and the journey to diagnosis
- » Up-to-date information on services provided by the council for children and young people with SEND, including short breaks and CLASS+
- » Signposting to groups and organisations across East Sussex that offer different services and opportunities



What you will find on the Local Offer 1Space directory

- » A range of local and online services, including activities and events, mental health and wellbeing support, schools' SEND and accessibility information, and much more
- » A map highlighting the location of local services, making it easier to find support nearby
- » Easy-to-use filters, so you can narrow down the services to only show those that are most relevant to you



Share your thoughts with us

- » We will continue to use feedback to drive changes and improvements, making information and support even clearer.
- » Please send any feedback or queries you have, either on the information website or directory, to: localoffer@eastsussex.gov.uk



Visit the website by scanning the QR code with your phones' camera